

## Development Permit Applications – Abandoned Wells

---

### Abandoned Well Information

#### Supplementary Application Requirements to comply with Subdivision and Development Regulation amendments (Alberta Regulation 160/2012)

Please be advised that as of November 1, 2012 municipalities are required to ensure that applicants include abandoned well information obtained from the Energy Resources Conservation Board (ERCB) in applications for development permits.

This applies to developments that require a new permit from the municipality for:

- new buildings larger than 500 sq. ft. (47 m<sup>2</sup>), or
- additions to buildings that will result in the building being this size or larger.

Buildings or structures that are less than 500 sq. ft. or developments that do not normally require a development permit from the municipality and are exempt from the land use bylaw, do not have to be addressed by the municipality. However, landowners are still responsible for ensuring they are not constructing over any abandoned wells that may be situated on the land.

**If your development proposal fits the criteria above, you are required to do the following:**

#### 1. Obtain map and well information

Please go to the ERCB's Abandoned Well Viewer (viewer) on the ERCB website at [www.ercb.ca](http://www.ercb.ca). The viewer will provide a map identifying all recorded abandoned well surface locations in the selected area and list any additional details that are available, including the licensee(s) of record and the latitude and longitude of each well's surface location.

If you do not have Internet access or have questions about the information provided by the viewer, you may contact:

- the ERCB Customer Contact Centre by telephone at: **1-855-297-8311 (toll-free)**, or
- by e-mail at: [Inquiries@ercb.ca](mailto:Inquiries@ercb.ca), or
- the ERCB Information Services by mail at: **Suite 1000, 250 - 5 Street SW, Calgary, AB T2P 0R4.**

#### 2. Submit the following as part of your development permit application

- the ERCB information, including a map of the search area from the viewer and a statement that there are no wells in the project area or a list and map identifying the location of abandoned wells within the search area (including the surface coordinates, as provided by the viewer or ERCB Information Services); and
- if an abandoned well is present, a detailed site plan must be provided that accurately illustrates the actual well location (i.e. latitude, longitude) on the subject parcel as identified in the field and the setback established in the ERCB Directive 079 (a minimum 5 metre radius around the well) in relation to existing or proposed building sites.

If there is an abandoned well located in the area of the proposed surface development, the applicant is advised to contact the well licensee of record for any additional information that may be needed or to physically locate the well, and to discuss the proposed development and abandoned well issue in more detail.

*[The attached sheets provide examples of the ERCB Abandoned Well Viewer (viewer) and maps.]*

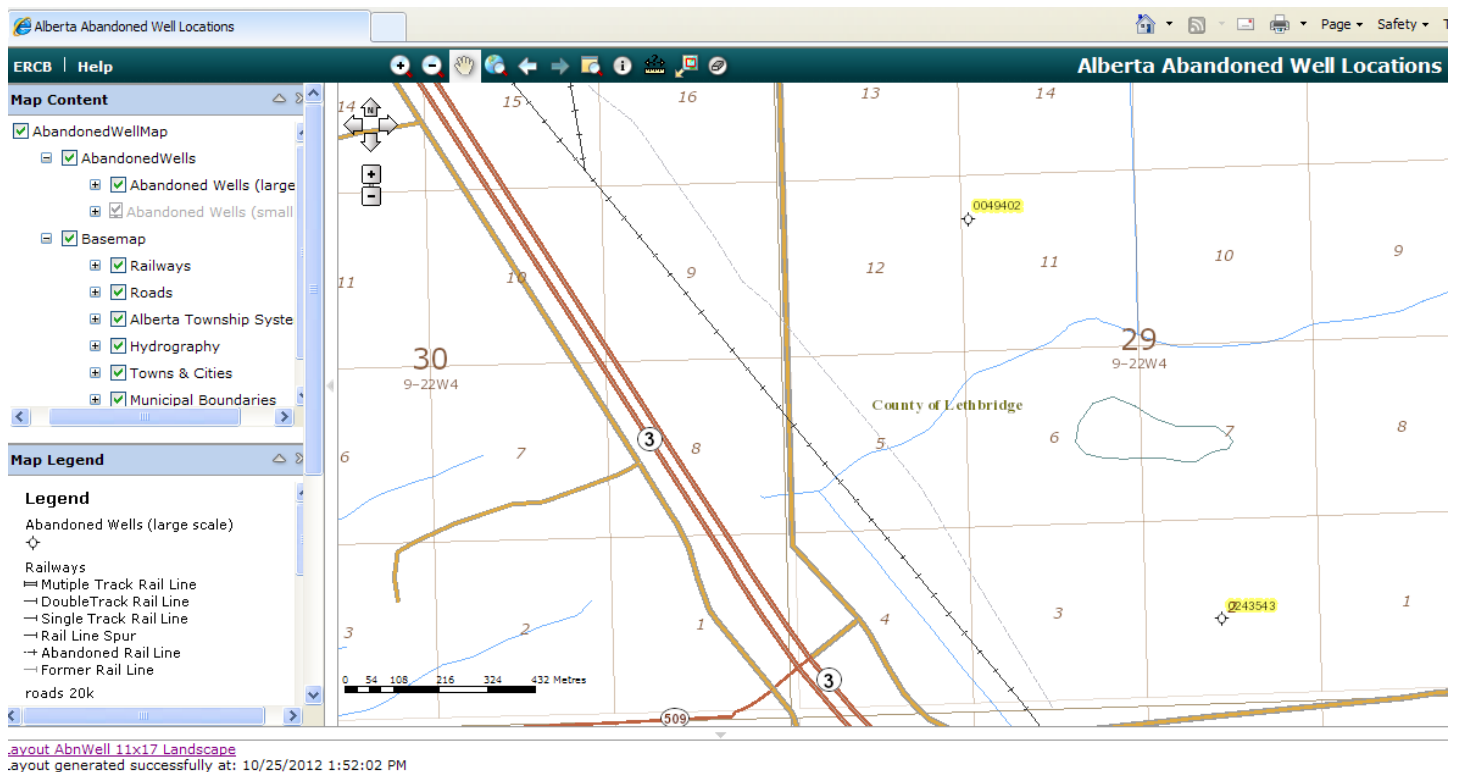
## Development Permit Application - Information for Abandoned Wells

### DIAGRAM 1

#### Example of ERCB's Abandoned Well Viewer

(ERCB website screen capture from [www.ercb.ca](http://www.ercb.ca) illustrating the well viewer program)

Note: viewer depicts information on map at scale of Legal Subdivisions (LSD's) for township sections.



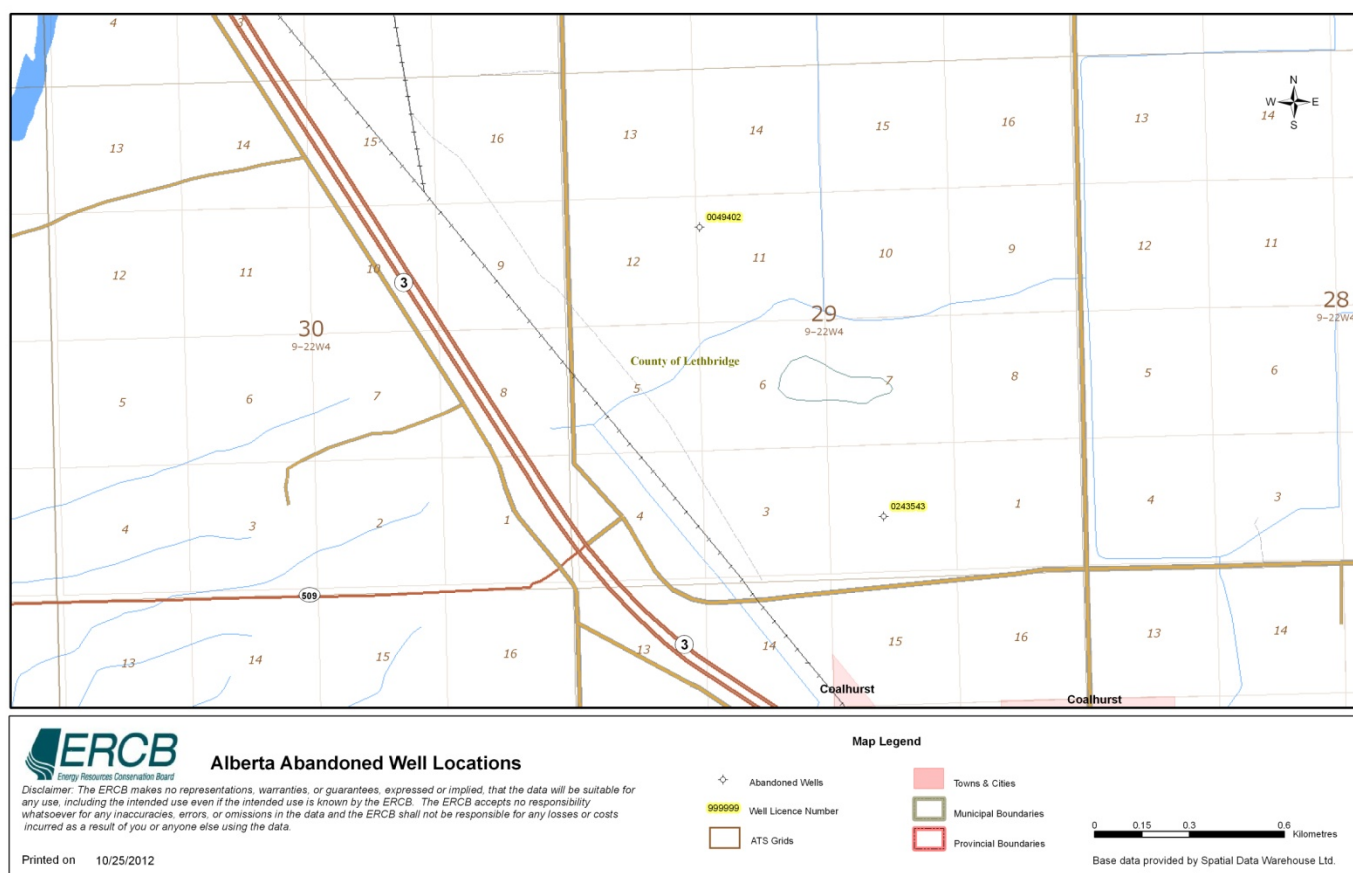
## Development Permit Application - Information for Abandoned Wells

### DIAGRAM 2

#### Example of ERCB's Abandoned Well Location Map

(Plot of well information provided from ERCB website at [www.ercb.ca](http://www.ercb.ca))

**Step 1 – Obtain map** - This is a sample of the type of map to be attached and submitted to the municipality in conjunction with a Development Permit Application.



#### Step 2 – Obtain well license information

If a well license number is shown on the map, perform the following steps: In the ERCB Abandoned Well Viewer, click on the Tasks tool bar, "Locate Abandoned Well", input the Well License Number, click "find". The well license information will be displayed as depicted below:

[1] records.

**Abandoned Wells (large scale)** [Select all](#), [Unselect all](#), [Zoom to all](#), [Export](#)

	Licence Number	Licensee Name	Status	Township	Meridian	Range	Section	LSD	Latitude	Longitude	Fluid	Licence Surface Location Label
		0243543	Bonavista Energy Corporation Issued	9	4	22	29	2	49.758215	-112.94558	Not Applicable	02-29-009-22W4